

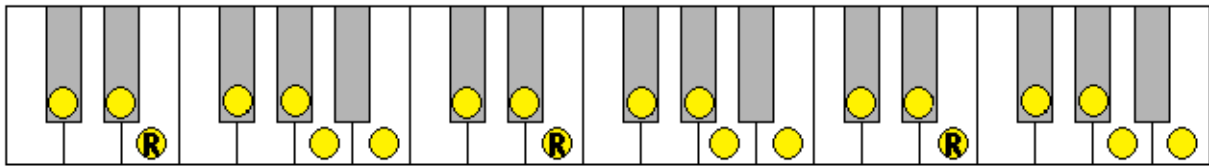
# Major Scale Crash Course

---

## *Lesson 5: E Major*

### Introduction

In this lesson we are going to learn the notes of the E Major scale, its key signature, how it appears on both the treble and the bass clefs, and how to play it on piano/keyboard.



### Constructing the E Major Scale

We start with the note E, and follow the major scale pattern

Whole Whole Half Whole Whole Whole Half

A whole step up from E is F#.

A whole step up from F# is G#.

A half step up from G# is A.

A whole step up from A is B.

A whole step up from B is C#.

A whole step up from C# is D#.

This gives us the notes of the E Major Scale:

**E F# G# A B C# D# E**

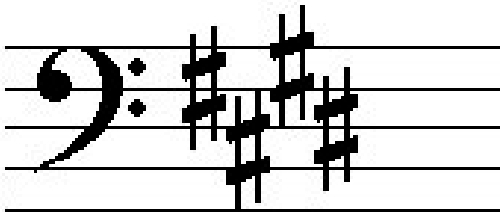
A Major has 3 sharps, C# and F#, G#.

## The Key Signature for E Major on the Treble Clef



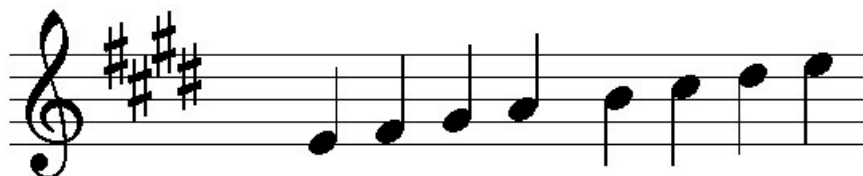
This is the key signature for E Major on the treble clef. The sharp symbols on the lines for D and F and the spaces for C and G indicate that C, D, F, and G are sharp.

## The Key Signature for E Major on the Bass Clef.



This is the key signature for E Major on the bass clef. The sharp symbols on the line for D and F and the spaces for C and G indicate that C, F, and G are sharp.

## E Major, Treble Clef, Ascending



Note     E    F#   G#   A    B    C#   D#   E

Here the notes of the E Major scale are shown on the treble clef. The notes are listed in ascending order, from lowest to highest. The lower E here represents “middle E.” The higher E at the end is called “high E”. On the keyboard or piano, notes listed on the treble clef are played with the right hand.

## E Major Spelling, Ascending

The notes of the E Major Scale are:

E F# G# A B C# D#

The sharp symbol, #, after the C represents C#. C# is one half-step higher than C natural. The sharp symbol after the D represents D#. D# is one half higher than D. The sharp symbol after the F represents F#. F# is one half-step higher than F natural. The sharp symbol after G represents G sharp. G sharp is one half-step higher than G. The key of E major contains four sharps, C#, D#, F#, and G#.

To make a complete octave, we add the octave E onto the end of the scale.

E F# G# A B C# D# E

**Exercise:** Spell out the note names 10 times.

E F# G# A B C# D# E

E F# G# A B C# D# E

....

## E Major, Treble Clef, Descending



Note    E    D#    C#    B    A    G#    F#    E

Here again are the notes of the E Major scale shown on the treble clef. The notes are listed in descending order, from highest to lowest. The high E on the left is “high E”. The lower E on the right is “middle E.” On the keyboard, notes listed on the treble clef are played with the right hand.

## E Major Spelling, Descending

The notes of the E Major Scale in descending order are:

E D# C# B A G# F#

To make a complete octave, we add the octave E onto the end of the scale.

E D# C# B A G# F# E

**Exercise:** Spell out the note names 10 times.

E D# C# B A G# F# E

E D# C# B A G# F# E

....

## Keyboard Fingering Chart

### Right Hand

1	Thumb
2	Index
3	Middle
4	Ring
5	Pinky

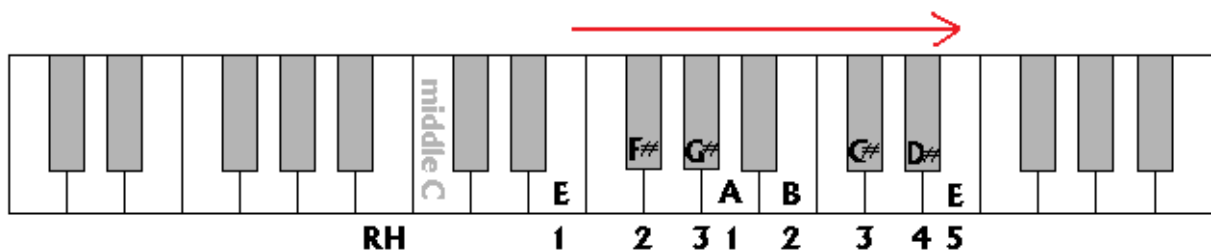
### Left Hand

1	Thumb
2	Index
3	Middle
4	Ring
5	Pinky

## E Major Playing, Treble Clef, Ascending



Note	E	F#	G#	A	B	C#	D#	E
RH Finger	1	2	3	1	2	3	4	5



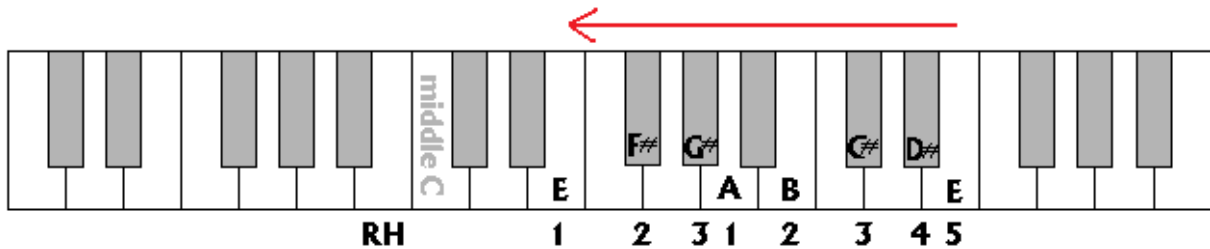
- Align your right hand thumb with E above middle C.
- Play the note E with finger 1 (thumb)
- Play the note F# with finger 2 (index)
- Play the note G# with finger 3 (middle)
- Play the note A with finger 1 (thumb) Cross your thumb under your index and middle finger.
- Play the note B with finger 2 (index)
- Play the note C# with finger 3 (middle)
- Play the note D#, on a black key, with finger 4 (ring)
- Play the note high E with finger 5 (pinky)

**Exercise.** Play this scale over and over. Play slowly and evenly. Try to play without looking at the keyboard. Hold your wrists up as you play. Increase speed as you improve over time.

## E Major Playing, Treble Clef, Descending



Note:	E	D#	C#	B	A	G#	F#	E
RH Finger:	5	4	3	2	1	3	2	1



- Align your right hand pinky with high E.
- Play the note high E with finger 5 (pinky)
- Play the note D#, on the black key, with finger 4 (ring)
- Play the note C#, on the next black key, with finger 3 (middle)
- Play the note B with finger 2 (index)
- Play the note A with finger 1 (thumb)
- Play the note G# with finger 3 (middle) Cross your middle finger over your thumb.
- Play the note F# with finger 2 (index)
- Play the note middle E with finger 1 (thumb)

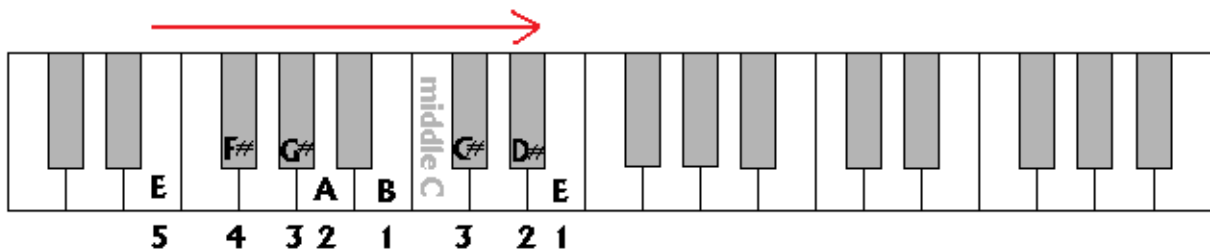
**Exercise.** Play this scale over and over. Play slowly and evenly. Try to play without looking at the keyboard. Hold your wrists up as you play. Increase speed as you improve over time.

## E Major, Bass Clef, Ascending



Note:	E	F#	G#	A	B	C#	D#	E
LH Finger:	5	4	3	2	1	3	2	1

Here are the notes of the E Major scale shown on the bass clef. The notes are listed in ascending order. They range from a low E, below middle C, to the middle E, just above middle C. On the keyboard, notes indicated on the treble clef are played with the left hand.



- Align your left hand pinky with low E, the E 5 white keys below middle C
- Play the note low E with finger 5 (pinky)
- Play the note F# with finger 4 (ring)
- Play the note G# with finger 3 (middle)
- Play the note A with finger 2 (index)
- Play the note B with finger 1 (thumb)
- Play the note C# with finger 3 (middle) (Cross finger 3 over your thumb.)
- Play the note D# with finger 2 (index)
- Play the note high E with finger 1 (thumb)

**Exercise.** Play this scale over and over. Play slowly and evenly. Try to play without looking at the keyboard. Hold your wrists up as you play. Increase speed as you improve over time.

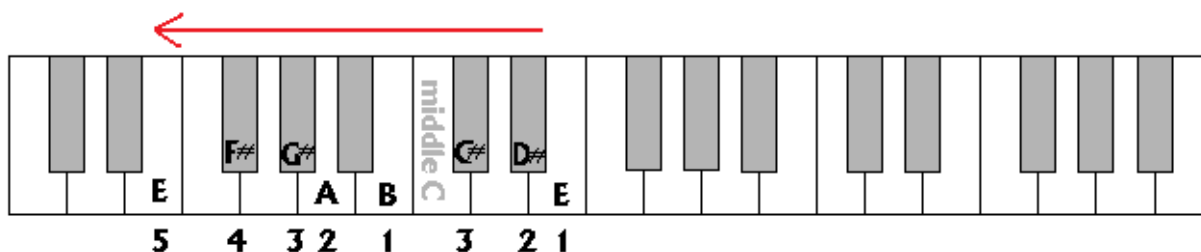


## E Major, Bass Clef, Descending



Note:	E	D#	C#	B	A	G#	F#	E
LH Finger:	1	2	3	1	2	3	4	5

Here are the notes of the E Major scale shown on the bass clef. The notes are listed in descending order. They range from middle E, just above middle C, to low E, one octave below middle E, the first E below middle C. On the keyboard, notes indicated on the bass clef are played with the left hand.



- Align your left hand thumb with middle E, the 2<sup>nd</sup> white key above middle C.
- Play the note middle E with finger 1 (thumb)
- Play the note D#, on the black key directly next to A, with finger 2 (index)
- Play the note C#, on the black key directly next to G, with finger 3 (middle)
- Play the note B with finger 1 (thumb) (Cross your thumb under fingers 2 and 3.)
- Play the note A with finger 2 (index)
- Play the note G# with finger 3 (middle)
- Play the note F# with finger 4 (ring)
- Play the note low E with finger 5 (pinky)

**Exercise.** Play this scale over and over. Play slowly and evenly. Try to play without looking at the keyboard. Hold your wrists up as you play. Increase speed as you improve over time.

**Exercise.** After learning to play the treble scale with your right hand and the bass scale with the left hand separately, practice playing both parts at the same time.